

Status: 04/2020



cab devices and systems

Products need labeling



For any requirement a proper solution

Since more than 40 years cab develops and manufactures solutions and a large amount of accessories for product marking. The product range includes label printers, print & apply systems, label dispensers and marking laser systems. In addition, cab provides ribbons and labels for the perfect imprint.

PRODUCTS NEED LABELING

In the automotive sector, labeling ensures traceability of components to the smallest screw. In logistics, it guarantees scheduled delivery. On electrical devices, typeplates refer to performance data and use. Pharmacy sees labeling prevent from errors relevant to health, in chemistry it points out to risks associated with the handling of a product - multi-colored and without any barrier as regards language. On food, labeling informs about ingredients and on textiles about its best possible care.



FOR THE CUSTOMER'S BENEFIT

When it comes to using the devices, cab customers expect both a long service life and 100 per cent availability. All the printing and labeling processes have to be precise and reliable. Intuitive operability is a further criterion especially with alternating staff. On this basis, cab continuously develops ideas and assigns new technologies to real applications.



88 per cent of all the customers steadily rely on cab solutions - many of them for 20 years or more.

Long before Advanced Manufacturing and the Internet of Things became evident, cab devices did far more than just printing on a label. The products' architecture has always been designed according to easy operation, integration in automated production lines as well as reliability. The interfaces and protocols of cab's current printer generation enable bi-directional interaction with master networks, production planning or PLC.

Shaping innovation together

MADE IN GERMANY

As an owner-operated family company cab offers customer focus and economic continuity.

Foresight, ideas, added by curiosity and joy in its own products and their further development have always been driving forces in the company.

Local subsidiaries in Germany, France, USA, Mexico, South Africa and Asia form the basis to meet the individual markets in the best possible way.

cab headquarters in Karlsruhe, Germany:
Product Development and Engineering,
International Sales, Marketing, Administration

COMPANY FACTS AND FIGURES

- founded 1975
- nine sites in seven countries
- 90 million Euros group turnover in fiscal year 2019
- Industry leader in automated and high-precision labeling
- Europe's major manufacturer of label printing systems



For further information see
www.cab.de/en





KLAUS BARDUTZKY

Managing Director and company founder

ALEXANDER BARDUTZKY

2nd generation Managing Director



Get an overview!

Label printers

Pages

7 - 15



Print and apply systems

Pages

17 - 19



Labeling heads

Pages

20 - 21



Print modules

Page

22



Label dispensers

Page

23



Marking laser systems

Pages

24 - 26



Software

Page

27



Labels, Ribbons

Pages

28 - 29



Design and technical specifications correspond to the date of the printing. Subject to change.

The data provided in the catalog do not represent any warranty or guarantee.

For current data see website www.cab.de/en

Label printers MACH1, MACH2



MACH1 with control buttons and LED signal

MACH2 with colored LCD display and navigator pad

4" desktop printers in proven technology

With the MACH1 and MACH2 cab completes its printer range in the lower price segment.

The devices ideally fit with small to medium duty applications in thermal transfer and direct thermal printing.

MACH1 is provided with control buttons and a LED signal, while MACH2 has a colored LCD display and a navigator pad.

■ Standard

Label printer		MACH1		MACH2	
Print head	Printing method	Thermal transfer, thermal direct			
	Printable resolution dpi	203	300	203	300
	Print speed up to mm/s	127	102	177	127
	Print width up to mm	108	105.7	108	105.7
Labels	Roll outside diameter up to mm	127			
	Width mm	25 - 112			
	Height mm	4 - 1,727	4 - 762	4 - 1,727	4 - 762
Ribbon	Ink side	outside or inside			
	Variable length up to m	300			
Printer sizes and weights	Width x Height x Depth mm	210 x 186 x 280			
	Weight kg	2.7		3	
Electronics	Data memory MB	16			
	Main memory SDRAM MB	8			
Interfaces	RS232-C	■		■	
	USB for PC	■		■	
	Ethernet	■		■	
	USB host	-		■	

The device can be opened up widely to insert the ribbon and the label roll.



For further information see www.cab.de/en/mach1-2

Label printers EOS2, EOS5



EOS2 for label rolls up to diameter 152 mm

EOS5 for label rolls up to diameter 203 mm

Compact printers providing many features of large industrial printers

The EOS combine all the functions of a solid label printer with highest ease of operation.

EOS2 is the compact one requiring little space, EOS5 processes label rolls up to diameter 203 mm.

■ Standard □ Option

Label printer		EOS2		EOS5	
Print head	Printing method	Thermal transfer, thermal direct			
	Printable resolution dpi	203	300	203	300
	Print speed up to mm/s	150			
	Print width up to mm	108	105.7	108	105.7
Labels	Roll, reel	■		■	
	Fanfold	□		□	
	Roll diameter / core diameter mm	up to 152 / 38,1 - 76		up to 203 / 38,1 - 76	
	Width mm	single lane 10 - 116, multi lane 5 - 116			
Ribbon	Height without label backfeed from mm	5			
	Ink side	outside or inside			
Printer sizes and weights	Variable length up to m	360			
	Width x Height x Depth mm	253 x 191 x 322		264 x 247 x 412	
Electronics	Weight kg	4		5	
	Processor clock rate MHz	800			
	Data memory MB	50			
Interfaces	Main memory RAM MB	256			
	RS232-C	■			
	USB for PC	■			
	Ethernet	■			
	Periphery	■			
USB host	■				

The EOS mobile can be supplied for example with the battery pack provided by cab - wherever labels are needed but no socket for power connection is available.



For further information see www.cab.de/en/eos

Label printer MACH 4S



MACH 4S to insert consumables from the front.

Industrial printers to insert consumables from the front

The MACH 4S provide all features of an industrial printer with a wide application range. Labels and ribbons are easy to insert from the front.

The large, colored touchdisplay with self-explanatory symbols offers best operability. The centered material guide eliminates any need of adjustments.

■ Standard

Label printer		MACH 4S			
Print head	Printing method	Thermal transfer, thermal direct			
	Printable resolution	dpi	203	300	600
	Print speed	up to mm/s	250	300	150
	Print width	up to mm	104	108.4	105.7
Labels	Roll, reel, fanfold	up to 205 / 38,1 - 76			
	Roll diameter / core diameter	mm	5 - 116		
	Width	mm	5 - 116		
	Height without label backfeed	from mm	5		
Ribbon	Height peel-off, single cut		12		
	Ink side		outside or inside		
	Variable length	up to m	360		
Printer sizes and weights	Width x Height x Depth	mm	240 x 317 x 435		
	Height when cover is open	mm	596		
	Weight	kg	6		
	Electronics	Processor clock rate	MHz	800	
Data memory		MB	50		
Main memory RAM		MB	256		
Interfaces	RS232-C		■		
	USB for PC		■		
	Ethernet		■		
	Periphery		■		
	USB host		■		



with a tear-off edge

with peel-off function

with a cutter



For further information see
www.cab.de/en/mach4s

Label printers SQUIX 2, SQUIX 4, SQUIX 6



SQUIX label printers with left-aligned material guide

Flexible printers for industrial applications

Whether operated stand-alone, linked to a PC or in a network – the rugged printers are always up to the mark. A large number of peripherals and software enable customer-specific solutions.

Basic devices providing

a tear-off plate: They print on labels or on continuous materials wound on rolls or fanfold. Materials are torn off on a jagged plate. Cutting is an option, so is external rewinding.

Peel-off devices providing

a rewinder internally: Peeling off labels is a feature added to a basic version. Labels are separated from the liner after printing to be removed by hand or by an applicator.

■ Standard □ Option

Label printer		SQUIX 2		SQUIX 4			SQUIX 6	
Print head	Thermal transfer	■						
	Thermal direct	□	-	■	■	-	■	
	Printable resolution dpi	300	600	203	300	600	203	300
	Print speed up to mm/s	250	150	250	300	150	250	
	Print width up to mm	56.9		104	108.4	105.7	168	162.6
Labels	Roll, fanfold	up to 205 / 38,1 - 76						
	Roll diameter / core diameter mm	up to 205 / 38,1 - 76						
	Width mm	4 - 63		20 - 116			46 - 176	
Ribbon	Height from mm without label backfeed	4		4			6	
	Ink side	outside or inside						
Printer sizes and weights	Variable length up to m	450						
	Width x Height x Depth mm	200 x 288 x 460		252 x 288 x 460			312 x 288 x 460	
Electronics	Weight kg	9		10			14	
	Processor clock rate MHz	800						
	Data memory MB	50						
Interfaces	Main memory RAM MB	256						
	RS232-C, USB for PC, Ethernet, Periphery, USB host, WLAN	■						
	Digital I/O interface	Peel-off version ■, basic version □						



For further information see
www.cab.de/en/squix



Customized handling

Labels can either be cut or perforated. Various peel-off adapters enable either automatic or manual dispensing. The labels can also be rewound for further processing.

For operation in production lines various applicators are provided that allow semi-automatic printing and applying.

Reliability

Due to comprehensive peripheral equipment the printers fully tackle any task, allowing to demonstrate their reliability in continuous operation in any working environment.



Tester for linear and 2D barcodes



Cutter and cutter tray



Internal rewinder



External rewinder



Applicators to be integrated in production lines



Demand module for packaging in motion

Label printers **SQUIX 4 M, SQUIX 4 MT**



SQUIX label printers with centered material guide

M series - precise and versatile

to print on all materials wound on rolls or reels or fanfold, in particular very small labels or slim continuous materials such as pressed shrink tubes.

MT series to print textile applications

In applications requiring high heat energies, a ribbon may stick with the textile tape after printing. A draw roller reliably separates the ribbon from the material.

Valid for both printer series:

Plungers remain fixed with all widths of material. There is no need of adjustment on the print head. Adapted print rollers are provided for slim materials

■ Standard □ Option

Label printer		SQUIX 4 M			SQUIX 4 MT	
Print head	Thermal transfer	■				
	Thermal direct	■	■	-	■	-
	Printable resolution dpi	203	300	600	300	600
	Print speed up to mm/s	250	300	150	300	150
	Print width up to mm	104	108.4	105.7	108.4	105.7
Labels	Roll, reel, fanfold					
	Roll diameter / core diameter mm	up to 205 / 38.1 - 76				
	Width mm	4 - 110			4 - 110	
Ribbon	Height from mm without label backfeed	3			4	
	Ink side	outside or inside				
Printer sizes and weights	Variable length up to m	450			450	
	Width x Height x Depth mm	252 x 288 x 460			252 x 288 x 460	
Electronics	Weight kg	10			10	
	Processor clock rate MHz	800			800	
	Data memory MB	50			50	
Interfaces	Main memory RAM MB	256			256	
	RS232-C, USB for PC, Ethernet, Periphery, USB host, WLAN	■			■	
	Digital I/O interface	Peel-off device ■, basic device □			Basic device □	



SQUIX 4 M with a stacker and cutter



For further information see www.cab.de/en/squix

Label printer A8+



A8+ for pallet and barrel labeling

8" printers for wide label applications

Examples: pallet and barrel labels

■ Standard □ Option

Label printer		A8+
Print head	Thermal transfer	■
	Thermal direct	■
	Printable resolution	300 dpi
	Print speed	up to 150 mm/s
	Print width	up to 216 mm
Labels	Roll outside diameter	up to 205 mm
	Width	46 - 220 mm
	Height without label backfeed	from 10 mm
Ribbon	Ink side	outside or inside
	Variable length	up to 360 m
Printer sizes and weight	Width x Height x Depth	352 x 274 x 446 mm
	Weight	15 kg
Electronics	Processor clock rate	266 MHz
	Data memory	8 MB
	Main memory RAM	64 MB
Interfaces	Centronics	□
	RS232-C	■
	USB for PC	■
	Ethernet	■
	RS422 / RS485	□
	Periphery	■
	USB host	■
	WLAN	□
Digital I/O	-	



For further information see
www.cab.de/en/a8plus

Label printer XD4T



XD4T for double-sided printing also on textile materials

Textile printer XD4T

The XD4T prints on both sides of a textile tape, cardboard labels, pressed tubes, continuous or ready-for-use, as well as on continuous plastic, paper or cardboard materials:

- No print head adjustment for different material widths
- Print rollers for narrow and slim materials

■ Standard □ Option

Label printer		XD4T
Print head	Printing method	Thermal transfer
	Printable resolution	300 dpi
	Print speed	125 up to mm/s
	Print width	105,6 up to mm
Labels	Roll outside diameter	300 up to mm
	Width	10 - 110 mm
	Height without label backfeed	20 from mm
Ribbon	Ink side	outside or inside
	Variable length	360 up to m
Printer sizes and weight	Width x Height x Depth	248 x 395 x 554 mm
Electronics	Weight	21 kg
	Processor clock rate	266 MHz
	Data memory	8 MB
	Main memory RAM	64 MB
Interfaces	RS232-C	■
	USB for PC	■
	Ethernet	■
	Periphery	■
	USB host	■
	WLAN	□
	Digital I/O interface	-



XD4T with a stacker and cutter



For further information see www.cab.de/en/xd4t

Label printers XC4, XC6



XC4, XC6 for two-color printing up to printhead width 162.6 mm

Printing two colors in one operation

In order to simultaneously print with two colors in one label, the XC have two thermal transfer units arranged in-line:

- Meets the conditions for the Classification and Labeling Inventory according to GHS
- For large label rolls to diameter 300 mm
- Provides ribbon saving function at one print head

■ Standard □ Option

Label printer		XC4	XC6
Print head	Printing method	Thermal transfer	
	Printable resolution dpi	300	
	Print speed up to mm/s	125	
	Print width up to mm	105.6	162.6
Labels	Roll outside diameter up to mm	300	
	Width mm	20 - 116	46 - 176
	Height mm	20 - 2,000	20 - 1,500
Ribbon	Ink side	outside or inside	
	Variable length up to m	360	
Printer sizes and weights	Width x Height x Depth mm	248 x 395 x 554	358 x 395 x 554
	Weight kg	22	24
Electronics	Processor clock rate MHz	266	
	Data memory MB	8	
	Main memory RAM MB	64	
Interfaces	USB for PC	■	
	Ethernet	■	
	Periphery	■	
	USB host	■	
	WLAN	□	



XC6 with a cutter



For further information see
www.cab.de/en/xc

we identify more

Consistent know-how, high level vertical integration

All mechanical and plastic components used in cab devices and systems are manufactured in-house at the Sömmerda site. Facilities, machinery and equipment are always using the latest technology.

Substantial equipment provides the preconditions to economically manufacture even complex marking systems that set demanding requirements on production processes. The competencies for the whole process chain of electronics, mechanics and software are provided within cab.



For further information see
<https://we-identify-more.com/en>



Tube labeling system **AXON 2**



AXON 2 is for printing 2D codes or linear barcodes on self-adhesive labels and applying the labels on tubes.

Labeling tubes reliably in real time

AXON 2 suits for labeling tubes individually as a manual workstation or integrated in sample processing systems.

Tubes of diameters 10 to 17 mm can be processed, capped or uncapped. Printing and labeling take less than two seconds.

After the tubes have been labeled, they can be removed one by one or be ejected to a tray.

■ Standard □ Option

Tube labeling system		AXON 2		
Print head	Thermal transfer	■		
	Thermal direct	□		
	Printable resolution	dpi	300	600
	Print speed	up to mm/s	150	
	Print width	up to mm	108.4	105.7
Labels	Roll outside diameter	up to mm	205	
	Width	mm	10 - 56	
	Height	from mm	15	
Ribbon	Ink side	outside or inside		
	Variable length	up to m	450	
Printer sizes and weights	Width x Height x Depth	mm	252 x 288 x 520	
	Weight	approx. kg	12	
Electronics	Processor clock rate	MHz	800	
	Data memory	MB	50	
	Main memory RAM	MB	256	
Interfaces	RS232-C	■		
	USB for PC	■		
	Ethernet	■		
	USB host	■		
	Digital I/O interface	□		



For further information see
www.cab.de/en/print-apply

Print and apply systems **HERMES Q, Hermes C**



HERMES Q with applicator **Hermes C with applicator**

HERMES Q

HERMES Q has been designed for automatic printing and applying in production lines.

Hermes C

Hermes C is for printing and applying with two colors in one operation. It has been developed and optimized especially for applications compliant to the Classification Inventory according to GHS.



Label transfer to the left



Label transfer to the right




For further information see www.cab.de/en/print-apply

■ Standard □ Option

Print and apply system		HERMES Q2		HERMES Q4		HERMES Q6.3		Hermes C 6L	
Print head	Thermal transfer	■		■		■		■	
	Thermal direct	-	-	■	-	■	-	-	-
	Printable resolution	300	600	203	300	600	203	300	300
	Print speed	300	150	300	150	250	125		
	Print width	59.6	54.1	104	108.4	105.7	168	162.6	
Labels	Roll outside diameter	205 / 305							
	Width	4 - 58		10 - 114		46 - 174		46 - 176	
	Height	3		4		6		20 - 356	
Ribbon	Ink side	outside or inside							
	Variable length	up to m		600				450	
Device sizes and weights	Width x Height x Depth ¹⁾	207 x 430 x 500		260 x 430 x 500		320 x 430 x 500		320 x 550 x 630	
	Weight	15 / 16		16 / 17		20		30	
Electronics	Processor clock rate	800		800		266		266	
	Data memory	50		50		8		8	
	Main memory RAM	256		256		64		64	
Interfaces	RS232-C					■			
	USB for PC					■			
	Ethernet / 2-Port Ethernet Switch			■ / ■				■ / -	
	USB master					■			
	Digital I/O interface					■			
	Periphery					■			
	Warning light					■			
	E-stop			-				■	
	ON/OFF valve of compressed air regulation unit			-				■	

¹⁾ with label roll diameter 305 mm


Applicators for product marking with HERMES Q



3214 **Swing applicator** 4114/4116 **Stroke applicators** 4214 **Stroke turn applicator** 4414 **Stroke applicator** 4514 **Swing stroke applicator** 4712 **Flag applicator**

Labels may be applied from all sides. Depending from the type of applicator, the product is either in motion or not in motion during labeling.

Applicators for package marking with HERMES Q



3014/3016 **Front side applicators** 4014/4016 **Stroke applicators** 4614 **Stroke blow applicator** 5114 **Demand module** 5314/5316 and 5414/5416 **Vacuum belt applicators** 6114 **Air jet box**

Labels may be applied from all sides. Depending from the type of pad, the packaging / product is in motion or not in motion during labeling.

Applicators for Hermes C



4126C / 4136C **Stroke applicators**
Labels may be applied from all sides. Depending from the type of pad, the product is in motion or not in motion during labeling.

Transfer modules for stroke applicators

- Tamp pad**
To press labels on flat surfaces
- Tamp pad spring-mounted**
To apply labels even on surfaces up to approx. 8° inclination
- Roll-on pad**
To roll labels on flat surfaces in motion

5326C / 5426C **Vacuum belt applicators**
For labeling on packaging or products in motion.

Labeling head **IXOR**



IXOR is the smallest servo-driven labeling head in its performance class.

Application of pre-printed labels on products or packaging

In the matter of mechanics, the IXOR can be ideally integrated in fully automatic labeling machines with the help of a modular construction kit. It can also be assembled to the conveyor belt of a production line by means of accessorial stands.

The device has the control unit integrated, a separate control cabinet is not required.

■ Standard □ Option

Labeling head		IXOR				
	Construction width	mm	124	186	248	310
Performance data	Label web speed	up to m/min	25 / 50 / 100 / 200 - depending from device type			
		up to ipm	1,000 / 2,000 / 4,000 / 8,000 - dep. from device type			
Labels	Roll outside diameter	up to mm	310 / 410 mm (12" / 16")			410 mm (16")
	Width	up to mm	120	182	244	306
	Length	mm	5 - 6,000			
Device sizes and weights	Width x Height with supply roll 310 mm	mm	600 x 600			-
	Width x Height with supply roll 410 mm	mm	680 x 700			925 x 825
	Depth	mm	266	328	390	452
	Weight	kg	14	14.5	15	32
Interfaces	Analog		■			
	Periphery		■			
	LAN		■			
	WLAN		■			
	Digital I/O interface		■			
	End of label web sensor		■			
	Start and stop sensor		■			
	Product speed synchronization		■			
	Serial		□			

Customized configuration

Every IXOR application follows individual demands. To evaluate all your requirements and apply them to the specifications of IXOR, cab has set up its own contact and sales department. Please contact our specialist staff at labeling@cab.de

Examples of construction

**Construction L - left-hand
Assembly V - vertical**



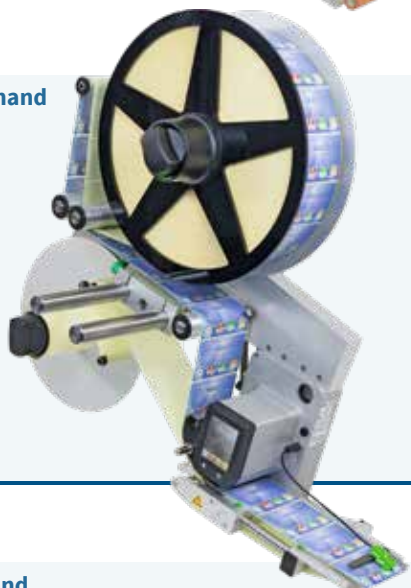
Pictured:
Labeling head 124 L
Unwinder D310 V 124 L
Outside diameter D: 310 mm

**Construction R - right-hand
Assembly V - vertical**



Pictured:
Labeling head 124 R
Unwinder D410 V 124 R
Outside diameter D: 410 mm

**Construction R - right-hand
Assembly V - vertical**



Pictured:
Labeling head 124 R
Unwinder D410 V 124 R motor-driven
Outside diameter D: 410 mm

**Construction L - left-hand
Assembly H - horizontal**



Pictured:
Labeling head 186 L
Unwinder D410 H 186 L
Outside diameter D: 410 mm



For further information see
www.cab.de/en/ixor

Print modules PX Q4, PX Q6



PX Q4, industrial device for accurate imprint

PX Q6 for Odette and UCC labels

Printing and labeling fully automatically in industrial applications

Full functionality, high reliability, comfortable operation and low downtime related to maintenance - the PX Q can be integrated in any orientation of assembly to solve even complex marking tasks.

Screwing is compatible to the devices of competitors.

■ Standard □ Option

Print module		PX Q4			PX Q6	
Print head	Printing method	Thermal transfer, thermal direct				
	Printable resolution dpi	203	300	600	203	300
	Print speed up to mm/s	300	300	150	250	
	Print width up to mm	104	108.4	105.7	168	162.6
Labels	Width mm	10 - 116			50 - 176	
	Height without backfeed from mm	6			12	
Ribbon	Ink side	outside or inside				
	Variable length up to m	600				
Electronics	Processor clock rate MHz	800				
	Data memory MB	50				
	Main memory RAM MB	256				
Interfaces	RS232-C	■				
	USB for PC	■				
	Ethernet / 2-Port Ethernet Switch	■ / □				
	USB host	■				
	Digital I/O interface	□				



Label transfer to the left

Label transfer to the right



For further information see www.cab.de/en/pxq

Label dispensers HS, VS



HS60+ for horizontal dispensing

VS120 for vertical dispensing

VS180+ for wide labels up to 180 mm

Dispensing labels - automatic or on request

With the HS and VS all label sizes can be easily dispensed. Labels may be punched or cut without space in between. Any outside shape, square or round, can be processed. Even transparent material can be dispensed:

- With horizontal dispensers (HS) the labels are peeled off in upward direction from their bottom edge and stuck to the product.
- With vertical dispensers (VS) the labels are peeled off in forward direction from their upper edge and stuck to the product via the shortest path.

“+” models have an operation panel added.

■ Standard

Label dispenser		HS	VS	HS+, VS+	
	Materials	Paper, textile, plastics on roll, punched or die cut, Leporello as an option			
	Feed rate	up to mm/s	200	100 / 200	
Rewinder	Carrier material outside diameter	up to mm 155			
Label sensor	Scanning	Label front edge			
	Distance to locating edge	mm	5 - 55		
	Height pre-dispense	mm	4 - 18		
Connectors	Peel-off on request via external signal			■	
	Power socket for non-heating apparatus	Power supply			
	Power switch	ON, OFF			
Device specific		HS60, VS60	HS120, VS120	HS180+, VS180+	
Labels	Roll outside diameter	up to mm 200			
	Width ¹⁾	mm	8 - 65	20 - 120	80 - 180
	Height one wide	mm	5 - 300	8 - 600	20 - 600
	Height multi wide	mm	5 - 110	8 - 110	20 - 110
Device sizes and weights	Width x Height x Depth	mm	180 x 250 x 360	230 x 250 x 360	300 x 250 x 360
	Weight	kg	3.3	3.6	4

¹⁾ carrier material included



For further information see
www.cab.de/en/hsvs

Marking laser XENO 4



XENO 4 / 20 with a scan head

Durable marking of metal and plastics

It is possible to mark stagnant products of metal or plastics in Medtech, aerospace, electronics and the automotive industries.

XENO 4 are diode-pumped and air-cooled. They have high beam quality and high pulse peak powers.

XENO 4 consist of two units: a control unit with an integral beam source, added by a scan head

The beam sources provide 20, 30 or 50 Watt maximum output power.

■ Standard

Marking laser			XENO 4 / 20	XENO 4 / 30	XENO 4 / 50
Beam source	cw output power	up to W	20	30	50
	Pulse energy	mJ	1		
	Wave length	nm	1,064		
	Beam quality M ²		<1.8		
	Pulse width	ns	<120		
	Pulse repetition frequency kHz		20 - 60	30 - 60	50 - 100
	Connecting cable	m	2.5		
Scan head	Assembly		horizontal / vertical		
	Marking speed	mm/s	~5,000		
Pilot laser	Wave length	nm	650		
	cw output power	mW	<1		
Electronics	Processor clock rate	MHz	600		
	Data memory	MB	512		
	Main memory RAM	MB	256		
Laser safety class EN60825-1	Beam source		Class 4		
	Pilot laser		Class 2		
Interfaces	RS232-C		■		
	Ethernet		■		
	Digital I/O interface		■		
	Remote		■		
	E-stop		■		
Rack 4RU 19"					
Device sizes and weights	Control unit	mm	420 x 178 x 420		
	Width x Height x Depth				
	Control unit weight	kg	16		
	Scan head	mm	99 x 135 x 205		
	Width x Height x Depth				
Scan head weight	kg	3			



For further information see www.cab.de/en/laser

Periphery samples for XENO 4 marking lasers



LSG+100E for the marking of serial parts **LM+** for the marking of labels made of laser markable foil

■ Standard

Laser safety housing LSG+100E

The LSG+100E offers an industrial solution for marking component series with a marking laser XENO 4. The rugged metal design besides a large work area provides enough space to integrate both the beam source and an industrial PC in a 19" assembly frame.

The operation door opens and closes electrically.

Laser label marker LM+

The LM+ allows to precisely mark labels of different sizes directly from the roll and cut them without the need of additional tools.

After the marking, the labels made of laser markable foil can either be separated with a cutter or rewound with an external rewinder.

Laser safety housing		LSG+100E 230 V	LSG+100E 120 V
	Work area	980 x 460 x 980	
	Width x Height x Depth	mm	
	Traversing speed	up to mm/s	
	Positional accuracy	mm	
Device sizes and weight	Width x Height x Depth	1,000 x 2,280 x 1,120	
	Weight	kg	
Interfaces	Digital I/O interface XENO 4	■	
	Remote XENO 4	■	
	E-stop XENO 4	■	
	Step motor Z axis, X axis, rotary axis	■	
	Extraction and filter device	■	
Laser label marker		LM+160.1	LM+254.1
	Work area	160 x 5 x 190	
	Width x Height x Depth	mm	
	Transport speed	mm/s	
Labels	Positional accuracy	mm	
	Roll outside diameter	up to mm	
	Width	mm	
Device sizes and weight	Height	up to mm	
	Width x Height x Depth	mm	
	Weight	kg	
Interfaces	RS232-C XENO 4 CON5	■	
	E-stop XENO 4	■	
	E-stop external	■	
	Cutter	■	



Markings on cast parts



Traceable sterilization



Medical size allocation



Aluminum rating plates

Laser marking system XENO 1



XENO 1 laser marking system “out of the box”

Compact desktop system, demanding little footprint

XENO 1 completes the range of cab laser marking systems in the lower price segment. Processing the system complies with high industrial standards.

The automatic operation door opens or closes within seconds. Material can be inserted manually or by a handling system from three sides.

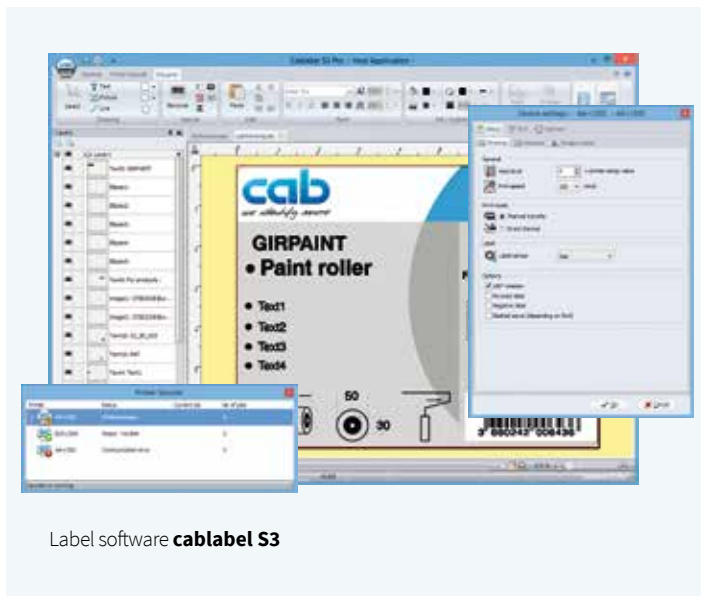
Interior LED lighting allows observation of the workpiece when the operation door is closed.

Laser marking system			XENO 1	
Beam source	cw output power	up to W	20	30
	Pulse energy	mJ	1	
	Wave length	nm	1,064	
	Beam quality M ²		< 1.8	
	Pulse width	ns	< 120	
	Pulse repetition frequency	kHz	20 - 60	30 - 60
	Pilot laser / focus finder	Wave length	nm	650
cw output power		mW	< 0.4	
Z axis	Work area	height mm	100 / 200	
	Traversing speed	mm/s	20	
	Positional accuracy	mm	±0.1	
Laser safety class EN60825-1			Class 1	
Interfaces	Work area		Rotary axis Digital I/O	
	Back of device		Ethernet TCP/IP 24 V for digital I/O interface Extraction and filter device External start External E-stop	
Device sizes and weight	Width x Height x Depth	mm	580 x 660 x 700	
	Weight	approx. kg	65	



For further information see
www.cab.de/en/laser

Software for cab devices



Label software **cablabel S3**



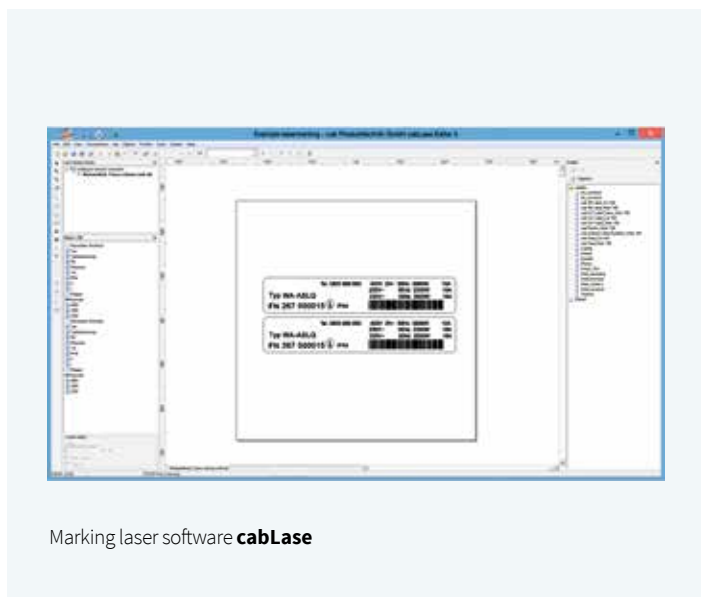
Designing, printing, administrating with cablabel S3

The cablabel S3 software opens up the full potential of cab devices. First of all, the label must be designed. Only when it comes to printing it has to be decided whether the label shall be processed on a label printer, a print and apply or marking laser system.

cablabel S3 is of a modular design which makes it adaptable to requirements step by step. To support functions like native JScript programming, elements such as the JScript Viewer are embedded as plug-ins. The designer user interface and the JScript code are synchronized in real time. Special functions like the Database connector or barcode testers can be integrated.



For further information see www.cab.de/en/cablabel



Marking laser software **cabLase**



Designing, controlling, monitoring with cabLase

cab marking lasers have installed cabLase Editor 5. It offers the key features

- graphic design of layouts,
- control of marking,
- monitoring the marking process.

Further software features are

- support of marking without a PC,
- remote control,
- remote API interface for integration in manufacturing processes,
- integrability in MES and ERP platforms.



For further information see www.cab.de/en/cablase

Stand-alone operation of cab printers

This operating mode is the printer's ability to select and print labels even when it is not connected to a host system.

The label has to be designed with a software such as cablabel S3 or by direct programming with a text editor on a PC. Label formats, texts, graphics as well as database contents are stored on a memory card, a USB memory stick or in the internal IFFS memory.

Only variable data are sent to the printer via a keyboard, a barcode scanner, scales or other systems. With the Database Connector, these data are recalled from the host and printed.



Precise printing with **cab labels**



Standard materials are offered from stock, **special labels** can be manufactured user-specific from more than 400 materials.

Good reasons to choose cab labels

Label surfaces are optimized for high resolution in thermal transfer printing. The diameters of rolls and cores as well as windings correspond with cab printers. cab cooperates with a partner certified according to IATF 16949. Sampling is offered corresponding to PPAP methods. Three samples of stock materials:



Paper white - slightly glossy

Applications are address labeling as well as the marking of product and goods in general in industry, logistics, trading or services.

This material offers high whiteness combined with a permanent adhesive.



Polyester white - matt

Applications are with customized stock materials resp. storage locations, goods on consignment, outdoor and production areas as well as potential hazards.

This material is highly resistant to tearing, oils and extreme temperatures, repelling dirt and water.



Polyester silver - matt

Applications are with printers having a high printable resolution: e. g. product type-plates or indicating labels when labeling devices indoor and outdoor

This material convinces with a strong adhesive power on smooth surfaces and high resistance to extreme temperatures.



For further information see
www.cab.de/en/labels

High-quality printing with **cab ribbons**



cab ribbons have a special back coating to avoid static electrification and better dissipate residual heat.

Good reasons to choose **cab ribbons**

Whether narrow or wide labels have to be applied, if it is for product or typeplate marking - cab provides more than 20 types of ribbons for any demand. Tailored specifically for cab printers, these ribbons offer a consistent high quality.

Wax ribbons

Fitting with fast and economical printing on vellum or coated paper, wax ribbons produce high-contrast, sharp and clear imprints with a high density. Recommended if wipe resistance is not a top priority.

Resin/wax ribbons

Resin/wax ribbons provide a higher abrasion and scratch resistance than pure wax ribbons while offering the same density. Recommended for a bunch of applications with chromated or coated papers as well as plastics.

Resin ribbons

Resin ribbons are highly resistant to scratching, extreme temperatures and dissolvers. They are therefore primarily used with plastic materials, even with coated surfaces. Ribbons withstanding washing and ironing are also available.

Colored ribbons on request

Colored cab ribbons in pure wax, resin/wax or pure resin qualities exhibit the same characteristics as the black ribbons. Golden or silver wax ribbons are specifically recommended for high-quality decorative labels.



For further information see
www.cab.de/en/ribbons

At home in **any industry**

A quarter of a million cab devices and systems are in continuous operation all over the world. They are in use in the automotive, chemical, pharmaceutical and textile industries, in electronics and medtech, transport and logistics as well as in retail and wholesale trading and the services sector.



Applications

Informational labels, warning labels, inventory, product labels, logging, labels for certification or testing, patient admission, pricing, storage location marking, shelf marking, address labels, shipping labels, incoming goods, tickets, typeplate marking, warranty labels, cable marking, tube marking, barrel labels, encoding, container labels, spare parts marking resp. identification

Customers

cab devices are operated by global players as well as by small and medium-sized companies.

A L N O KLINIKUM EMIRATES AIRLINES DEUTSCHE POST OSIANDER BMW AIRBUS MARQUARDT SEW-EURODRIVE SIEMENS
 KRONES HOCHLAND HELLA DOLE LIDL ZODIAC AEROSPACE VAG TTS ROSSMANN
 TRW MAHLE MOTOROLA CONTINENTAL MÜNCHEN 3M EBMPAPST PHOENIX CONTACT KIT TÜV SÜD HUK COBURG
 BAUMÜLLER FAURECIA MOTOROLA CONTINENTAL MÜNCHEN 3M EBMPAPST PHOENIX CONTACT KIT TÜV SÜD HUK COBURG
 M A H L E M O T O R O L A C O N T I N E N T A L M Ü N C H E N 3 M E B M P A P S T P H O E N I X C O N T A C T K I T T Ü V S Ü D H U K C O B U R G
 S T E G O A U D I K W C
 R A G U A R H U K C O B U R G C
 R O S S M A N N
 R A F I S I K O R S K Y
 Q U N D I S
 V A W Q U N D I S



„We set milestones in the development and manufacturing of devices and systems for product marking.“

*Roman Schnider
Head of Software Development*



Services and training

Services

Well-trained cab service engineers worldwide support in the maintenance and repair of the devices.

Send your printer to a cab service center or a service partner selected by us. Your device will be checked and repaired within few workdays. If requested, a loan device will be offered.

You prefer maintenance and repair on-site in your company? Then make an appointment with our Services Department:

Phone **+49 721 6626 300**, Email: service.de@cab.de

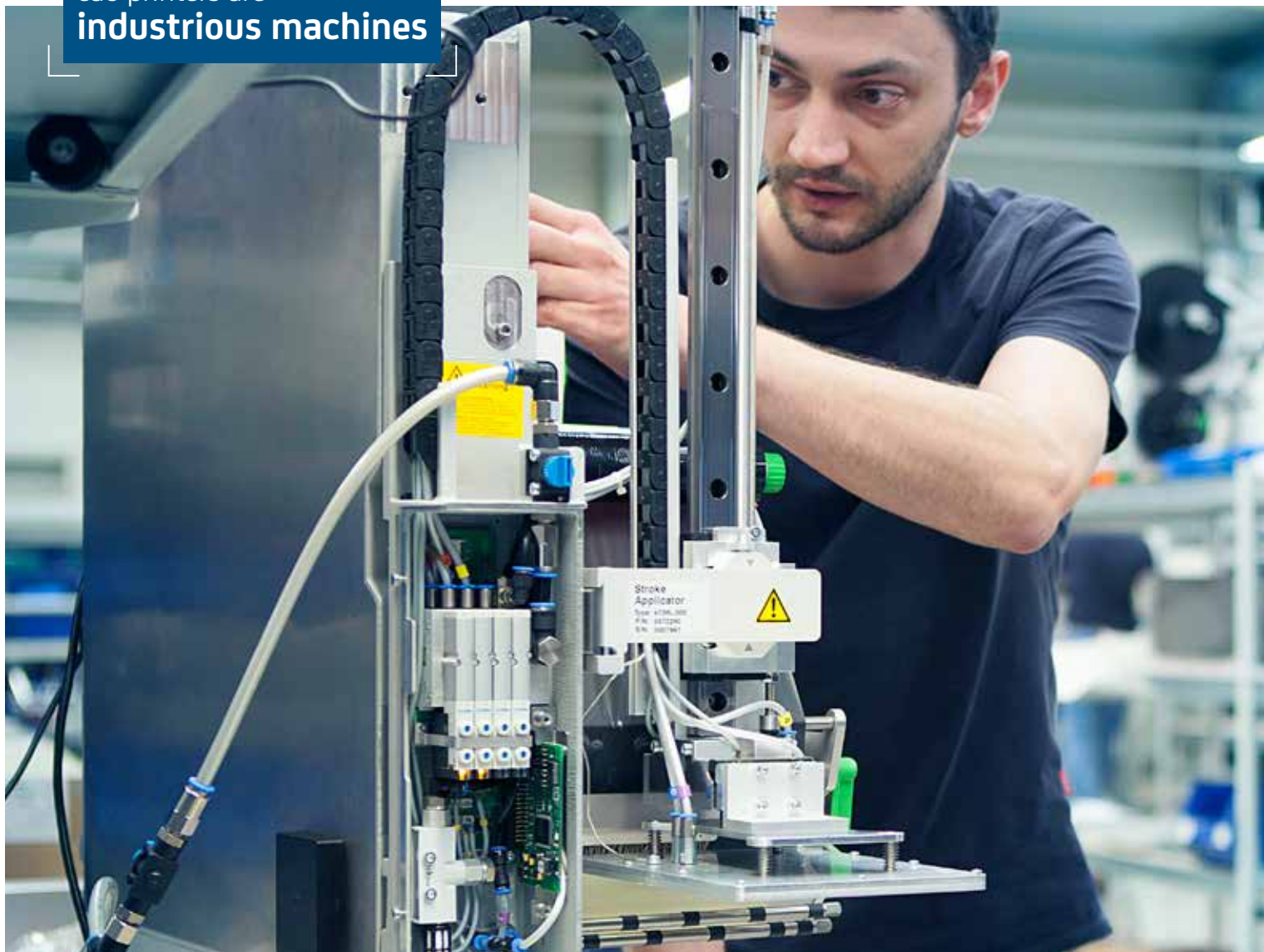
Training

Enhance your know-how on cab devices with regard to an effective use, service and repair.

In Karlsruhe we offer trainings on the handling of the devices, label design, software, printer drivers, programming, database access as well as on how to integrate in networks or superior ERP systems. We gladly send you detailed information on all our current training offers on request.

Individually we offer trainings according to your specific demands – in Karlsruhe or on-site in your company.

cab printers are
industrious machines



Germany
cab Produkttechnik GmbH & Co KG
Karlsruhe
Phone +49 721 6626 0
www.cab.de

France
cab Technologies S.à.r.l.
Niedermodern
Phone +33 388 722501
www.cab.de/fr

USA
cab Technology, Inc.
Chelmsford, MA
Phone +1 978 250 8321
www.cab.de/us

Mexico
cab Technology, Inc.
Juárez
Phone +52 656 682 4301
www.cab.de/es

Taiwan
cab Technology Co., Ltd.
Taipei
Phone +886 (02) 8227 3966
www.cab.de/tw

China
cab (Shanghai) Trading Co., Ltd.
Shanghai
Phone +86 (021) 6236 3161
www.cab.de/cn

China
cab (Shanghai) Trading Co., Ltd.
Guangzhou
Phone +86 (020) 2831 7358
www.cab.de/cn

South Africa
cab Technology (Pty) Ltd.
Randburg
Phone +27 11 886 3580
www.cab.de/za

cab // 820 distribution partners in more than 80 countries



WALZ
Label & Mailing Systems
624 High Point Ln, East Peoria, IL 61611-9329
(309) 698-1500 T/F (877) 971-1500
www.walzeq.com email: walz@walzeq.com

cab
we identify more