



**SWIVEL - LINK**

intelligently designed



**PRODUCT CATALOG**

# SWIVEL - LINK®

intelligently designed

Swivel-Link® is a registered trademark product designed and manufactured by A&P Tool, Inc. It is sold through Authorized Distributors—  
A complete list can be found at [www.swivellink.com](http://www.swivellink.com). Each part is precision-machined from billet 6061 aluminum, anodized, and laser-etched.

## KITS

### Machine Vision Kits

The simple way to securely mount your vision camera and lighting solution in one easy to order kit. We have kits for the most popular brands of cameras on the market today. Shown are examples of popular kits detailing everything that is included. There are hundreds of kit configurations available to meet most needs. Visit [swivellink.com](http://swivellink.com) to create a kit for your specific needs and to see the latest product offerings.

### Operator Kits

Operator kits add the ultimate in ergonomics for machine cycle start and emergency stop buttons, as well as indicator lights and interface monitors. The button base is sized to prevent damage to the expensive start button that is vital to operating your equipment. The internal cable routing eliminates cut or damaged wires. Operation indicating lights can now be repositioned as needed for better visibility. The monitor mounting kit is a robust way to mount any monitor with industry standard VESA mount patterns. There are hundreds of kit configurations available to meet most needs.

### End of Arm Tooling (EOAT) Kits

Imagine a simple solution to build a vacuum end of arm tool for an industrial robot to pick up virtually any shape or profile. This can be accomplished quickly and easily by parking the robot in a known pick position, adjusting the EOAT to fit the part, placing the cups where you want to grip, and tightening the knuckles to lock the cups in position. They work with centralized and decentralized vacuum solutions.

## PRODUCTS

### Standard Series

The standard series allows you to pick and choose solutions to everyday mounting needs. The ball and socket design allows for 3-dimensional positioning and mounting. Knuckles provide an extreme range of motion while maintaining the internal through feed capability without pinching a cable. Four socket head cap screws securely lock the position. Links are available in multiple lengths, while couplers mix and match between the standard and XS series. Combine bases, knuckles, and links to fit your specific requirements.

### XS Series

The XS series has the same ball and socket design principle as the standard series on a smaller scale. Designed for smaller and lighter applications, these items are perfect for most machine vision cameras, lights, and sensors. Use the coupler to adapt the XS series ball to the standard series.

### Vision Camera Series

The mounting plates are designed to fit specific camera brands and types. Each plate is designed to work with a variety of cameras in the same brand. These plates are offered with the machine vision kits or as an individual purchase. Use the tripod adaptor to add the swivellink touch to any standard camera on the market, even digital video cameras. These can be combined with various parts in standard and XS series to create endless possibilities and custom assemblies. To use an XS series plate on a standard series you would need a AFSB-2-2XS coupler.

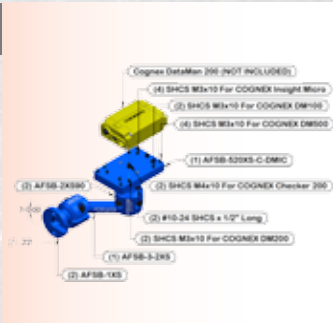
### Vision Lighting Series

Light adaptor plates are designed for common area, bar, and spot lights. These products can be combined with various parts in standard and XS series to create endless possibilities and custom assemblies in vision lighting. The XS series in this line will only mount to the XS products. A coupler is needed to mount to the standard series. All standard Vision Lighting series will mount to both the XS and standard series.

### Specialty Series

We offer many specialty products to suit industry needs. Products like our sensor threaded mounts make it easy to position and aim optic, inductive, or capacitive sensors with the added benefit of internal cable routing. These can be combined with various parts in standard and XS series to create endless possibilities and custom assemblies.

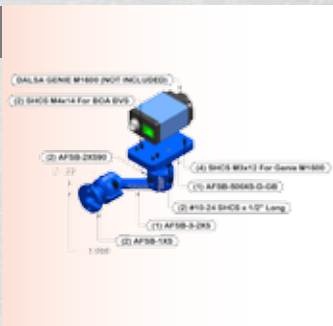
### AFSB-1002XS-CDMIC



### COGNEX

This kit has the mounting plate for the Cognex Dataman, Insight Micro, 4GX, and Checker 200. Includes (1) AFSB-520XS-C-DMIC plate, (2) AFSB-1XS bases, (2) AFSB-2XS90 T-knuckles, (1) AFSB-3-2XS 2" link.

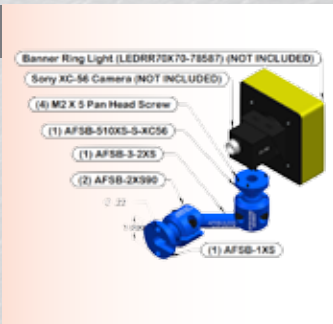
### AFSB-1002XS-DGB



### DALSA

This kit has a mounting plate for the Dalsa Genie M1600 and Boa BVS-0640. Includes (1) AFSB-500XS-D-GB plate, (2) AFSB-1XS bases, (2) AFSB-2XS90 T-knuckles, (1) AFSB-3-2XS 2" link.

### AFSB-1002XS-XC56

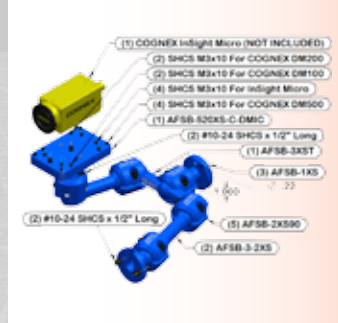


### SONY

This kit has a mounting plate for the Sony XC-56 camera. Includes (1) AFSB-510XS-S-XC56 plate, (1) AFSB-1XS base, (2) AFSB-2XS90 T-knuckles, (1) AFSB-3-2XS 2" link.

### COGNEX

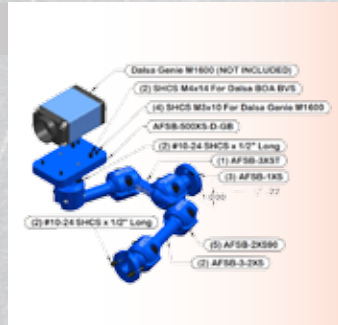
This kit has a mounting plate for the Cognex Dataman, Insight Micro, 4GX, and Checker 200. Also includes a Tee link to add a light or additional camera. Includes (1) AFSB-520XS-C-DMIC plate (3) AFSB-1XS bases, (5) AFSB-2XS90 T-knuckles, (2) AFSB-3-2XS 2" link (1) AFSB-3XST T-Link.



### AFSB-1102XS-DGB

### DALSA

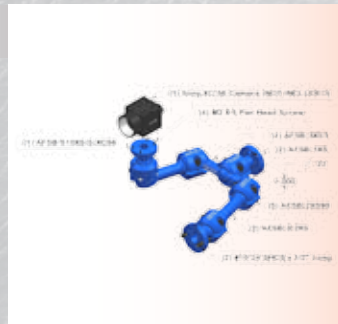
This kit has a mounting plate for the Dalsa Genie M1600 and Boa BVS-0640 along with a Tee Link to add a light or additional camera. Includes (1) AFSB-500XS-D-GB plate (3) AFSB-1XS bases, (5) AFSB-2XS90 T-knuckles, (2) AFSB-3-2XS 2" link (1) AFSB-3XST-Link.



### AFSB-1102XS-XC56

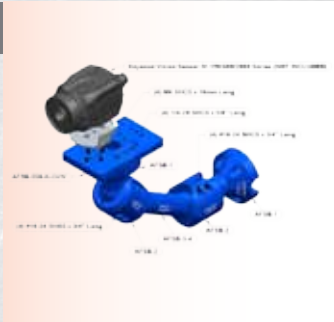
### SONY

This kit has a mounting plate for the Sony XC-56 camera along with a Tee Link to add a light or additional camera. Includes (1) AFSB-510XS-S-XC56 plate (2) AFSB-1XS bases, (5) AFSB-2XS90 T-knuckles, (2) AFSB-3-2XS 2" link (1) AFSB-3XST-Link.





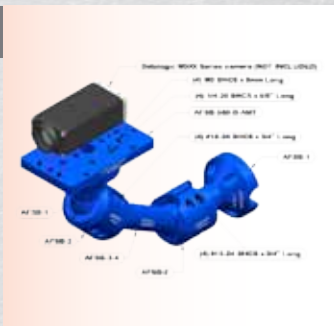
### AFSB-1004-K-CVIV



### KEYENCE

This kit has a mounting plate for the Keyence CV-035/CV-200 with or without the bracket, CV-S200, CV-S035, IV150, IV500, IV2000, and Mounting Wall Adaptor. Includes (1) AFSB-550-K-CVIV plate, (2) AFSB-1 bases, (2) AFSB-2 knuckles, (1) AFSB-3-4 4" link.

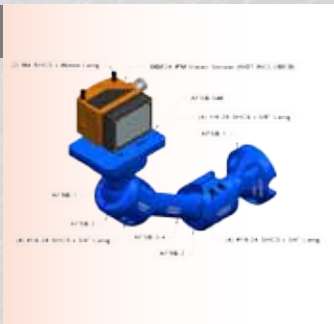
### AFSB-1004-D-AMT



### DATALOGIC

This kit has a mounting plate for the Datalogic A20, M1XX without bracket, M1/M2/M3XXT series brackets with metric and standard holes, and M2XX/M3XX/T series without bracket. Includes (1) AFSB-560-D-AMT plate, (2) AFSB-1 bases, (2) AFSB-2 knuckles, (1) AFSB-3-4 4" link.

### AFSB-1004-IFM



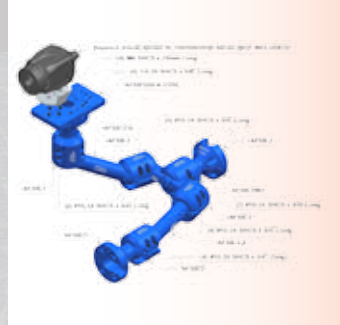
### IFM

This kit has a mounting plate for the IFM O2V100 series, O2D220 Series, O3D200/201, and O1D100 series. Includes (1) AFSB-540-IFM plate, (2) AFSB-1 bases, (2) AFSB-2 knuckles, (1) AFSB-3-4 4" link.

### AFSB-1104-K-CVIV

#### KEYENCE

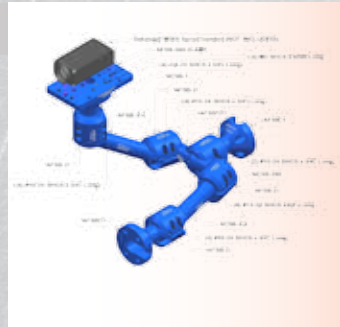
This kit has a mounting plate for the Keyence CV-035/CV-200 with or without the bracket, CV-S200, CV-S035, IV150, IV500, IV2000 and Mounting Wall Adaptor. Includes a Tee Link to add a light or additional camera. Includes (1) AFSB-550-K-CVIV plate, (3) AFSB-1 bases, (1) AFSB-290 T-knuckle, (1) AFSB-3T T-link, (4) AFSB-2 knuckles, (2) AFSB-3-4 4" links.



### AFSB-1104-D-AMT

#### DATALOGIC

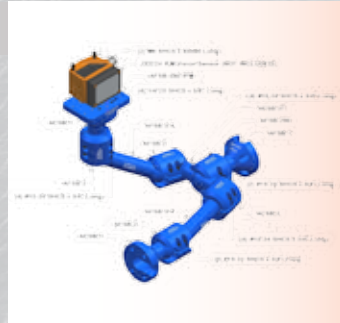
This kit has a mounting plate for the Datalogic A20, M1XX without bracket, M1/M2/M3XXT series brackets with metric and standard holes, and M2XX/M3XX/T series without bracket. Includes a Tee Link to add a light or additional camera. Includes (1) AFSB-560-D-AMT plate, (3) AFSB-1 bases, (1) AFSB-290 T-knuckle, (1) AFSB-3T T-link, (4) AFSB-2 knuckles, (2) AFSB-3-4 4" links.



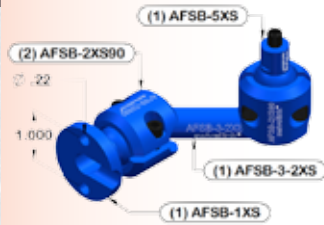
### AFSB-1104-IFM

#### IFM

This kit has a mounting plate for the IFM O2V100 series, O2D220 Series, O3D200/201, and O1D100 series. Also includes a Tee Link to add a light or additional camera. Includes (1) AFSB-540-IFM plate, (3) AFSB-1 bases, (1) AFSB-290 T-knuckle, (1) AFSB-3T T-link, (4) AFSB-2 knuckles, (2) AFSB-3-4 4" links.



### AFSB-1002XS-5XS



### TRI-POD MOUNT

This kit has a mounting screw for any camera that has a 1/4-20 standard tripod mount. Includes (1) AFSB-5XS ball stem, (1) AFSB-1XS base, (2) AFSB-2XS90 T-knuckles, (1) AFSB-3-2XS 2" link.

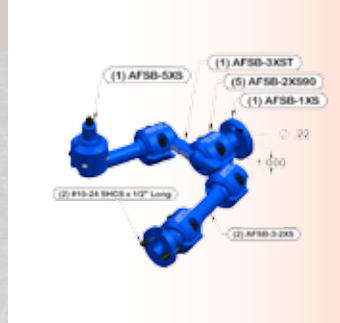




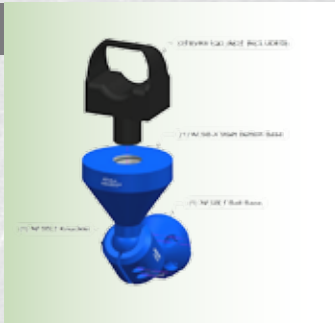
### AFSB-1102XS-5XS

#### TRI-POD MOUNT

This kit has a mounting screw for any camera that has a 1/4-20 standard tripod mount. Also includes a Tee Link to add a light or additional camera. Includes (1) AFSB-5XS ball stem, (2) AFSB-1XS bases, (5) AFSB-2XS90 T-knuckles, (2) AFSB-3-2XS 2" link, (1) AFSB-3XST T-Link.



### START/STOP BUTTON — AFSB-1000-4



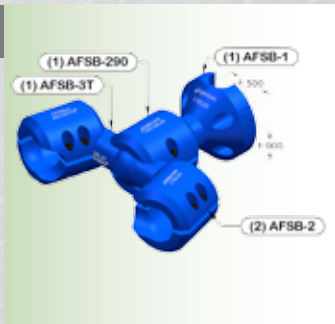
This kit has a M30 thread for mounting start or E-stop button. Includes (1) AFSB-4 Button Base, (1) AFSB-1 Base, (1) AFSB-2 knuckle.

### STACK LIGHT MOUNT — AFSB-1000-7



This kit has an AFSB-7 with a 30mm thread for mounting stack lights for status. Includes (1) AFSB-7 Sensor Mount, (1) AFSB-1 Base, (1) AFSB-2 knuckle.

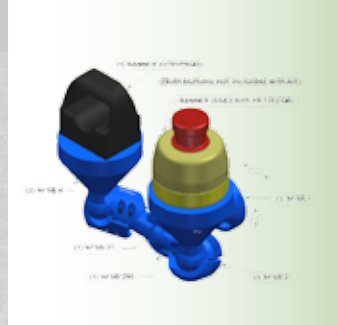
### STANDARD T-KIT — AFSB-1100



This kit is the base Tee Link kit ready for Additions. This kit includes (1) AFSB-1 base, (1) AFSB-290 T-Knuckle, (1) AFSB-3T T-Link, (2) AFSB-2 knuckles.

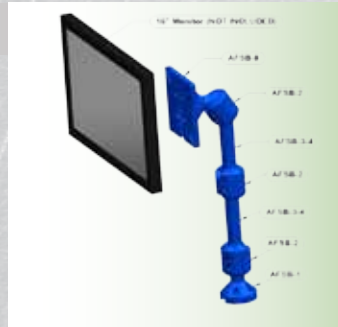
### START AND STOP BUTTON — AFSB-1100-4

This kit has 2 AFSB-4 which have M30 threads for mounting start button or E-stop buttons. Includes (2) AFSB-4 Button Bases, (1) AFSB-1 Base, (1) AFSB-290 T-knuckle, (1) AFSB-3T T-Link, (2) AFSB-2 knuckles.



### MONITOR (VESA) MOUNT — AFSB-1044-9

This kit has a monitor mount for VESA 75mm and 100mm. Includes (1) AFSB-9 Plate, (2) AFSB-1 Bases, (3) AFSB-2 knuckles, (2) AFSB-3-4" Links.



***"Finally - these are the mounts I have been searching for!"***  
***—Jose, Production Manager***

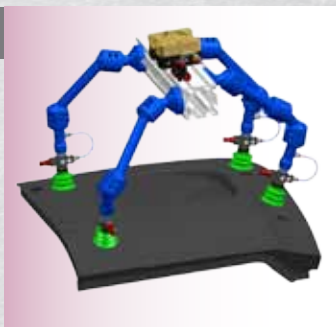


### AFSB-10-V



This kit includes everything needed to add vacuum to our standard series products. Directly thread in any vacuum cup with a G1/2 fitting or use one of the included adaptors for G3/8 or G1/4 fittings. The supply hose routes back through the knuckles, links, and bases for a clean and reliable solution with no exposed hoses. We also include a special adaptor for mounting decentralized vacuum grippers that have an M8 stud. The side port allows the pressure supply to run internally and the only exposed hose is at the gripper.

### EXAMPLE APPLICATION



Shown is an example of just how easy it is to build a decentralized robot vacuum end of arm tool to fit a complex shaped part. Start with a length of T-Slot extruded aluminum, fittings, hoses, add a handful of swivelink products and you are ready to go. There is no need to spend countless hours designing a custom 3-dimensional vacuum gripper. By routing all of the pressure supply hoses inside the swivelink, you protect the hoses from damage and improve durability while maintaining a clean, uncluttered tool. Shown is (4) AFSB-1000-10 kits, (5) AFSB-2 knuckles, (4) AFSB-3-6 links, and (1) AFSB-3-2 links.

### CROSS SECTION VIEW



Shown is the hose and fittings running internally through a knuckle and link. The knuckle design allows the full range of motion without pinching or kinking the hose. The hoses and fittings are protected from damage while maintaining a clean appearance.



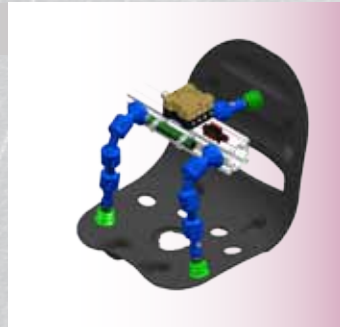
### AFSB-1000-10-V

This kit adds a knuckle and a ball base to the AFSB-10-V for a great start to building your vacuum gripper. By adding links and knuckles, this kit can be extended to fit most any need. Includes (1) AFSB-10-V Vacuum Kit, (1) AFSB-1 base, (1) AFSB-2 knuckle.



### EXAMPLE APPLICATION

Shown is an example of just how easy it is to build a centralized robot vacuum end of arm tool to fit a complex shaped part. This is the perfect solution for gripping concave or convex shaped parts. Instead of making a gripper to fit the part, let the gripper conform to the part. These examples show how the same basic design works for several applications simply by adding standard parts as needed. Add one of our sensor mounts (see specialty products) and you now have presence detection. Shown is (3) AFSB-1000-10 kits, (4) AFSB-2 knuckles, and (4) AFSB-3-2 links.



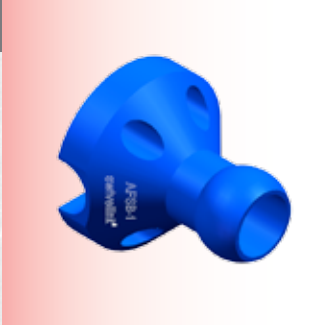
*We develop new and unique solutions to meet the needs of our customers. Visit [swivellink.com](http://swivellink.com) to see what's new.*

# PRODUCTS

## SWIVEL - LINK

intelligently designed

### AFSB-1



The ball base has a hole pattern to fit most standard T-slot aluminum extrusions. The through hole can be used for routing wires, cables, or small hoses. There is an exit groove out the side of the base for cables, hose, and wires.

### AFSB-2



The knuckle uses a double socket configuration to clamp the ball on a base, link, or sensor mount. The design allows for a large range of motion while maintaining the internal hose and cable routing capability.

### AFSB-290



The Tee Knuckle was designed to work with a Tee Link to create two branches from one base. These knuckles can also be used to give a full 180° range of motion if you do not need through cable routing.

# PRODUCTS

## SWIVEL - LINK

intelligently designed

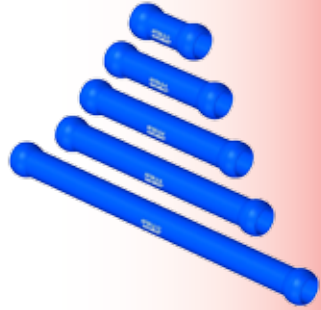
### AFSB-3

This product is a ball only that can be used with a 1/2" NPT threaded pipe to acquire any length necessary. The ball size fits our standard series.



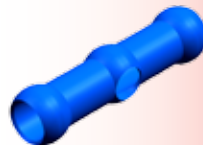
### AFSB-3- (2, 4, 6, 8, 12)

Links are used with knuckles to extend the reach and increase the flexibility. Standard series are available in 5 lengths: 2", 4", 6", 8", and 12". Links are hollow to continue the cable routing ability. Example: AFSB-3-6 would be a 6" link



### AFSB-3T

The Tee Link, when used with a Tee Knuckle gripped on the center ball, creates two separate branches. The hole in the center ball allows cable and hose routing for each branch.



STANDARD SERIES

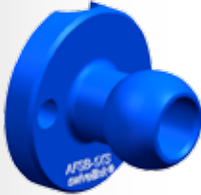


# PRODUCTS

## SWIVEL - LINK

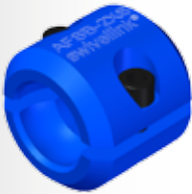
intelligently designed

### AFSB-1XS



The ball base has 2 holes for ease of mounting. The through hole can be used for routing wires, cables, or small hoses. There is an exit groove on the side of the base for cables, hose, and wires.

### AFSB-2XS



The knuckle uses a double socket configuration to clamp to the ball on a base, link, or sensor mount. The design allows for a large range of motion while maintaining the internal hose and cable routing ability.

### AFSB-2XS90



The Tee Knuckle was designed to work with a Tee Link to create two branches from one base. These knuckles can also be used to give a full 180° range of motion if you do not need through cable routing.



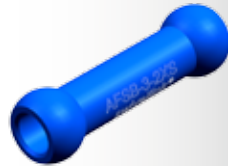
# PRODUCTS

## SWIVEL - LINK

intelligently designed

### AFSB-3-2XS

Links are used with knuckles to extend reach and increase flexibility. This is a 2" link for shorter applications. Links are hollow to continue the cable routing ability.



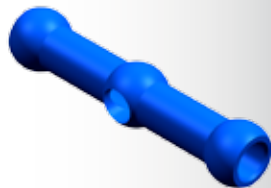
### AFSB-3-4XS

Links are used with knuckles to extend the reach and increase the flexibility. This is a 4" link for longer applications. Links are hollow to continue the cable routing ability.



### AFSB-3XST

The Tee Link, when used with a Tee Knuckle gripped on the center ball, creates two separate branches. The hole in the center ball allows cable and hose routing for each branch.



XS SERIES

# PRODUCTS

## SWIVEL - LINK

intelligently designed

### AFSB-5



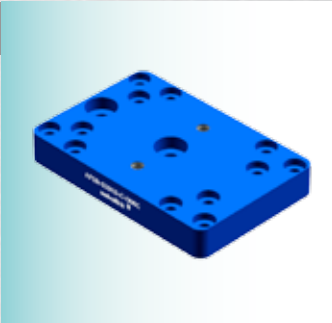
Our most versatile in the vision series. Fits: BANNER 70mm area light, Presence plus camera mounts: COGNEX Checker 100, Dataman 100/200, Insight 5000 (5100, 5100C, 5401, 5400C, 5403, 5400), DVT Legend 500, DALSA, BOA, KEYENCE IV-500/150/2000 Vision sensors. Mounts to AFSB-1.

### AFSB-500XS-D-GB



Fits: Dalsa Genie M1600 and BOA BVS-0640. Mounts to AFSB-1XS.

### AFSB-520XS-C-DMIC



Fits: Cognex Dataman 100/200/500, Insight Micro, 4GX, and Checker 200. Mounts to AFSB-1XS

# PRODUCTS

SWIVEL - LINK

intelligently designed

## AFSB-5XS

If your camera has a 1/4-20 tripod mount, you can simply thread on the XS series stem and mount your camera. Mounts to AFSB-2XS, AFSB-2XS90, and AFSB-2-2XS.



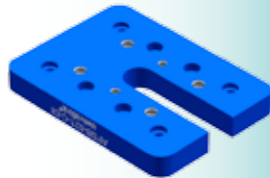
## AFSB-510XS-S-XC56

Fits: Sony XC56. Mounts to AFSB-2XS, AFSB-2XS90, and AFSB-2-2XS



## AFSB-521-C-DI

Fits: Cognex Dataman 300 and Insight 7000.  
Mounts to AFSB-1 or AFSB-1XS



VISION CAMERA SERIES

# PRODUCTS

SWIVEL - LINK

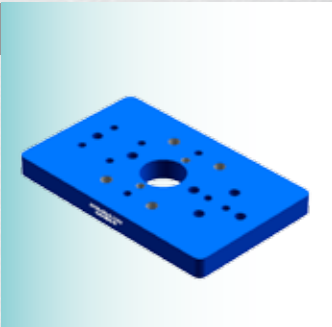
intelligently designed

## AFSB-530-B-P4



Fits: Banner P4 Vision Sensors. Mounts to AFSB-1 or AFSB-1XS.

## AFSB-550-K-CVIV



Fits: Keyence CV-035/CV-200 with or without the bracket, CV-S200, CV-S035, IV150, IV500, IV2000, and Mounting Wall Adaptor. Mounts to AFSB-1 and AFSB-1XS.

*Your authorized distributor is a great resource for just-in-time Swivel-Link® parts, as well as knowledge in application and how to use Swivel-Link® as a solution to your problems. Be sure to take advantage of their value-added services!*

VISION CAMERA SERIES



# PRODUCTS

SWIVEL - LINK

intelligently designed

## AFSB-540-IFM

Fits: IFM O2V100 series, O2D220 Series, O3D200/201, and O1D100 series. Mounts to AFSB-1 and AFSB-1XS.



## AFSB-560-D-AMT

Fits: Datalogic A20, M1XX without bracket, M1/M2/M3XXT series brackets with metric and standard holes, and M2XX/M3XX/T series without bracket. Mounts to AFSB-1 and AFSB-1XS.



VISION CAMERA SERIES

# PRODUCTS

## SWIVEL - LINK

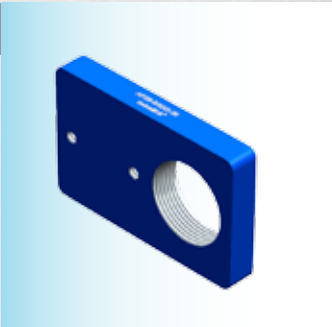
intelligently designed

### AFSB-620-S75



Fits: Smart Vision brick light S75, SC75, ODS75, SW75, and ODSW75. Mounts to AFSB-1 and AFSB-1XS.

### AFSB-630XS-30



Fits: 30mm thread. Mounts to AFSB-1XS

### AFSB-632-WLS28-285X



Fits: Banner WLS28 strip light non-switch 145mm long, non-switch 285mm long, and with ON/OFF switch 145mm long. Mounts to AFSB-1 and AFSB-1XS.

# PRODUCTS

SWIVEL - LINK

intelligently designed

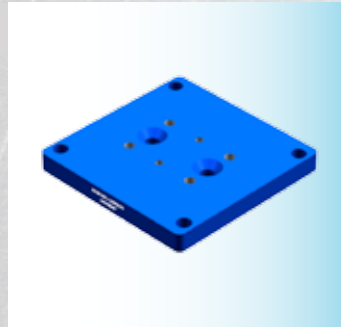
## AFSB-621-L300

Fits: Smart Vision L300. Mounts to AFSB-1 and AFSB-1XS.



## AFSB-631-LEDRA70

Fits: Banner LEDRA70 area light. Mounts to AFSB-1 and AFSB-1XS.



VISION LIGHTING SERIES

*"This has been a great solution to a problem we've had for a long time."*

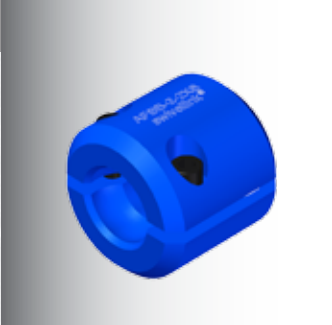
*—Bob, Swivel-Link® Customer*

# PRODUCTS

## SWIVEL - LINK

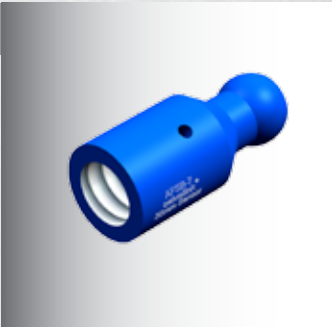
intelligently designed

### AFSB-2-2XS



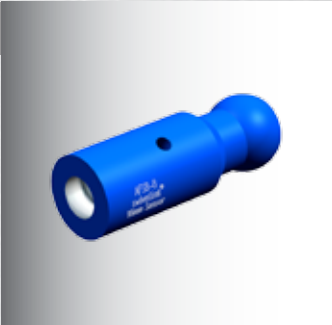
This coupler connects a standard size ball to an XS series ball. This is great for mixing and matching to meet your needs.

### AFSB-7



The sensor mounts are threaded for barrel-type sensors. Sight holes allow the ability to see the indicator lights even when the sensor is threaded into the mount. The sensor cable can still run back through your swivellink assembly for a clean look and protection from damage. Available in 30mm threaded size. Mounts to AFSB-2, AFSB-290, and AFSB-2-2XS.

### AFSB-8



The sensor mounts are threaded for barrel-type sensors. Sight holes allow you the ability to see the indicator lights even when the sensor is threaded into the mount. The sensor cable can still run back through your swivellink assembly for a clean look and protection from damage. Available in 18mm threaded size. Mounts to AFSB-2, AFSB-290, and AFSB-2-2XS.



# PRODUCTS

## SWIVEL - LINK

intelligently designed

### AFSB-4

When ergonomics are important there is no better way to put a cycle start button on a machine. With threaded M30 x 1.5 and room for the cable connection inside, these are designed to protect the button from damage. Use them once and you will never go back to a square bracket. Mounts to AFSB-2 and AFSB-290.



### AFSB-7XS

The sensor mounts are threaded for barrel-type sensors. Sight holes allow you the ability to see the indicator lights even when the sensor is threaded into the mount. The sensor cable can still run back through your swivellink assembly for a clean look and protection from damage. Available in 12mm threaded size. Mounts to AFSB-2XS, AFSB-2XS90, and AFSB-2-2XS.



### AFSB-8XS

The sensor mounts are threaded for barrel type sensors. Sight holes allow you the ability to see the indicator lights even when the sensor is threaded into the mount. The sensor cable can still run back through your swivellink assembly for a clean look and protection from damage. Available in 8mm threaded size. Mounts to AFSB-2XS, AFSB-2XS90, and AFSB-2-2XS.



SPECIALTY SERIES

# PRODUCTS

SWIVEL - LINK

intelligently designed

## AFSB-6



This blank plate is for end user custom mounting. Mounts to AFSB-1.

## AFSB-10-G12



The vacuum adaptor exists for systems needing vacuum applications. The end is ID threaded for a G12 and can be used for through or external Vacuum systems. Mounts to AFSB-2 and AFSB-290.

*Don't see what you need?*

*Contact your authorized distributor to have custom parts quoted. For a list of authorized distributors visit [www.swivellink.com](http://www.swivellink.com).*

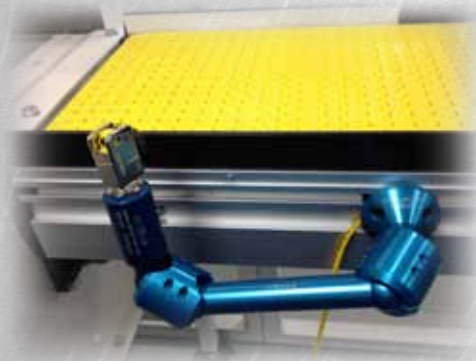
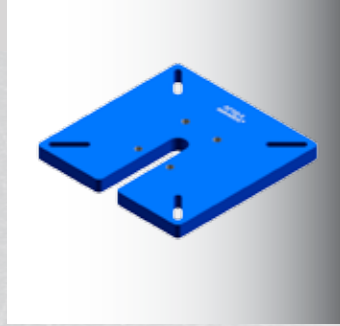
# PRODUCTS

SWIVEL - LINK

intelligently designed

**AFSB-9**

This plate has a monitor mount for VESA 75mm and 100mm. Mounts to AFSB-1.



**SPECIALTY SERIES**



# SWIVEL - LINK

intelligently designed

The Swivel-Link® product was originally designed to provide an ergonomic and robust way to put operator start buttons onto custom built industrial machinery. The goal was to protect the expensive button and route the quick disconnect cable internally, because a simple wire break or damaged button can cause hours of costly production down time. We then added our camera adaptor plate to utilize the mounting flexibility to position cameras and lighting to get the best images possible. From there, we developed our sensor mounts for a quick and easy way to add part present sensors. As vision systems became smaller and lighter it was clear that swivellink had to shrink to fit the needs. That is when we developed the XS series. This brought about a much smaller form factor while maintaining the rigidity required for a solid machine vision system. Our kits take all the guesswork out of selecting the various parts needed to fit the application. With vision systems, monitor mounting became a natural addition. Our latest designs include applications for use with robot end of arm tools and are an exciting addition to the product family.

The Swivel-Link® product line has been used for hundreds of different applications in all types of industries. Used for vision systems, cycle start buttons, sensors, lights, monitors, part fixtures, tool holsters, and robot applications. The possibilities are endless for your mounting solution.



**Contact your authorized distributor or visit the website for additional items and updated products.**

[www.swivellink.com](http://www.swivellink.com)

Your Local Dealer:



**WALZ**  
Label & Mailing Systems  
624 High Point Ln, East Peoria, IL 61611  
(309) 698-1500 T/F (877) 971-1500  
[www.walzeq.com](http://www.walzeq.com)

Designed & Printed by  
THE GRINGHAM GROUP  
[gringham.com](http://gringham.com)

Publication Date: 02/28/13