



DATAMAN 8700 SERIES HANDHELD BARCODE READER

Cutting-edge performance
for the toughest codes

DATAMAN 8700 SERIES HANDHELD BARCODE READER

Cutting-edge performance for the toughest codes

Manufacturing environments in automotive, medical device, electronics, aerospace, and other industries require rugged, high performing, and easy to use barcode reading technology to ensure top component traceability and productivity. The DataMan® 8700 series handheld barcode reader decodes the toughest direct part mark (DPM) and label-based codes while withstanding harsh oils, dirt, and water. A built-in display screen enables quick setup and operator feedback, and the reader supports a broad range of industrial protocols and communications to connect and operate efficiently in any facility.

- Oil and water resistant
- High capacity battery
- Patented decoding algorithms
- Advanced integrated lighting
- Fast response times

Oil- and water-resistant housing

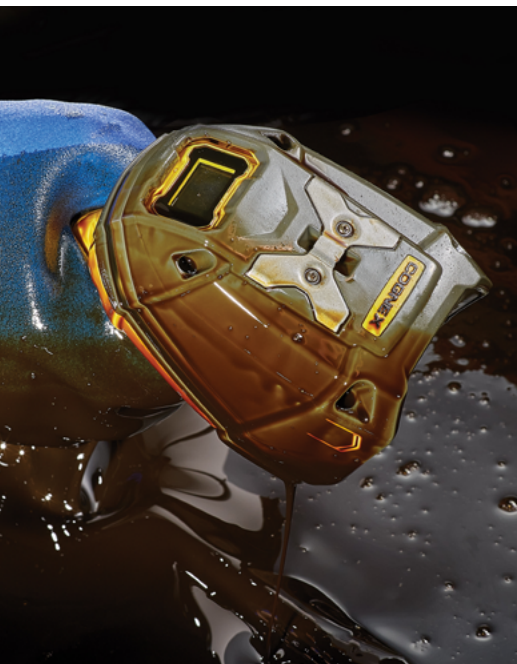
In the past, oils and fluids surrounding the application site have quickly damaged barcode scanners, but the DataMan 8700 is built to last in the harshest environments. It has IP67-rated housing and meets the ISO 16750-5 oil specification for oil resistance. It is submersible in one meter of water without causing damage and withstands multiple drops from 2.5 meters onto concrete.



DataMan 8700DX



DataMan 8700DQ



Rugged design with innovative technology

Unique to DX

High speed liquid lens autofocus technology

HDR imaging

Integrated diffuse, polarized, and direct lighting



Platform features

Patented algorithms optimize read performance

Multi-core processing power for fast decoding

360-degree LED indicator ring light

IP67-rated housing for dirt, oil, and water resistance

Built-in EtherNet/IP, PROFINET industrial protocols

Corded and wireless options available including Bluetooth and Wi-Fi

Unique to DQ

Diffuse lighting

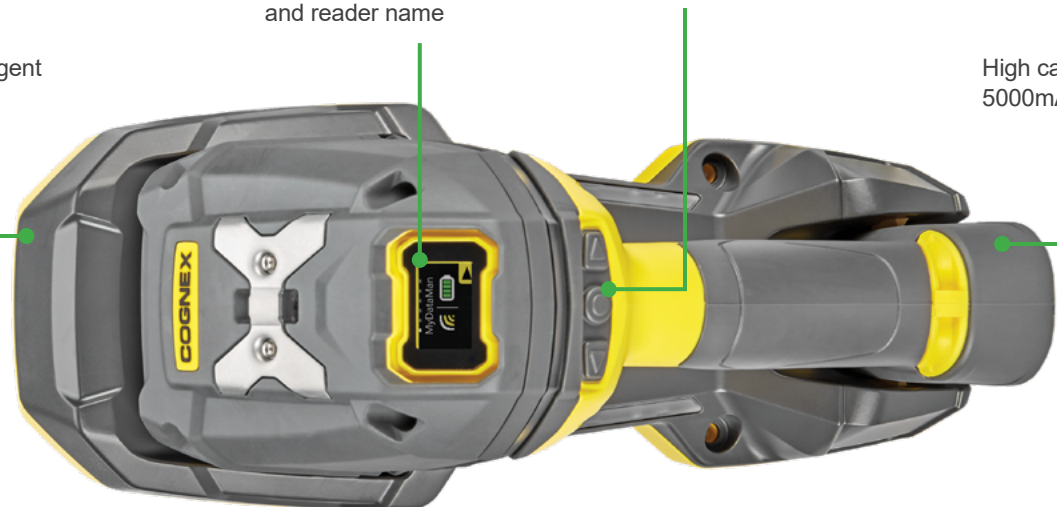


OLED display screen shows wireless signal, battery life, and reader name

Configuration buttons provide easy setup from the reader

IP65-rated intelligent base station

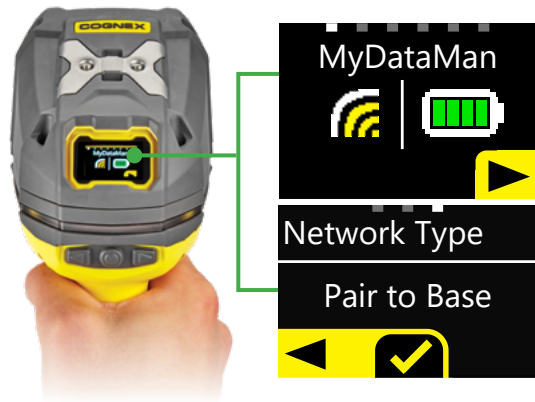
High capacity 5000mAh battery



Setup without connecting to a PC

First-of-its-kind OLED display screen to make setup easy and to give operators quick and intuitive feedback without connecting to a PC.

- Setup the reader using the configurator buttons below the screen
- Name the reader so it's easy to know which station it belongs to
- View the wireless signal strength to ensure the reader is within range
- Monitor battery life so the reader doesn't power down mid-shift
- Review code data to ensure a successful read



Integrated industrial protocols enable DataMan 8700 to easily connect to PLCs and factory networks. The DataMan 8700 supports more communication options than ever before including Wi-Fi 5GHz and 2.4 GHz, Bluetooth 4.2, and a corded option. It allows for a direct connection to computers, tablets, and phones.

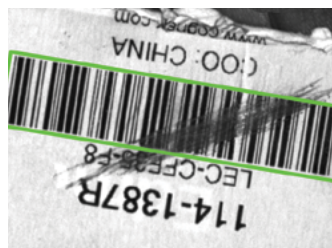


Premium read performance in milliseconds

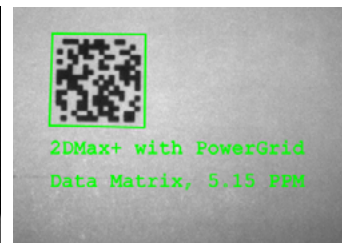
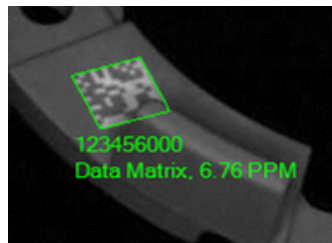
DataMan 8700 series is equipped with the latest patented decoding algorithms and a multi-core processor to read codes in under 150 milliseconds.



1DMax® with Hotbars® is an algorithm and technology optimized for omnidirectional 1D barcode reading, decoding up to 10X the speed of a conventional barcode reader.



2DMax® with PowerGrid® is a breakthrough algorithm and technology designed to read 2D codes with significant damage to or complete elimination of a code's finder or clocking pattern, or quiet zone.



High speed multi-core processor provides ultra-high speed decode response times, enabling operators to scan codes faster.



DX advanced features

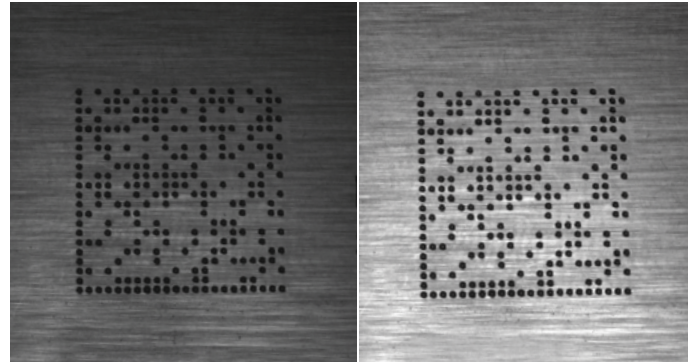
The DataMan 8700DX model was designed with advanced features like HDR imaging technology and a high speed liquid lens to reliably scan the toughest codes.



High Dynamic Range (HDR) imaging uses the latest CMOS image sensor technology to acquire single images that are significantly more detailed than conventional sensors. HDR

takes advantage of the extra available image data to:

- Enhance image quality and contrast
- Show more detail in the image
- Capture features that were not visible before
- Increase depth of field
- Reduce light intensity

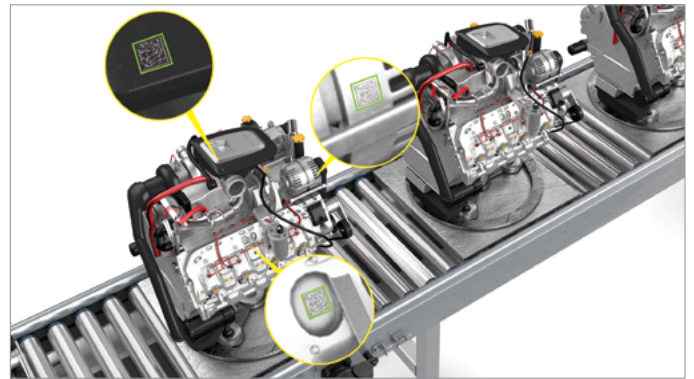


No HDR

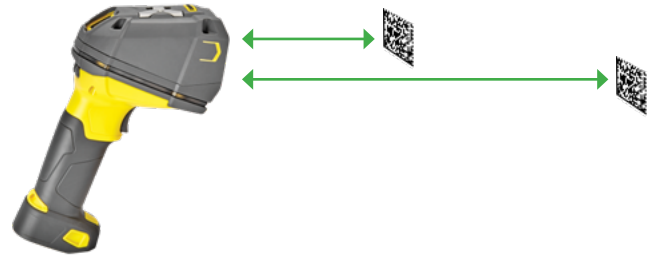
With HDR



Integrated **diffuse, polarized, and direct lighting** enables superior image formation to read dot peen, laser-etched, and label-based codes on challenging (shiny, cylindrical, dark) surfaces without any hot spots.



High speed liquid lens (autofocus) technology automatically adapts to changes in working distances without any reconfiguration or wait time to focus. It enables greater depth of field range without compromising optical quality to read codes faster and easier at distances near and far.



DataMan 8700 offers cutting-edge performance, robustness, and ease-of-use to improve part traceability and improve factory efficiency and productivity. To learn more, visit cognex.com/dataman-8700.



SPECIFICATIONS

	DataMan 8700DX	DataMan 8700DQ
Algorithms	1DMax, 2DMax, Hotbars, PowerGrid	
Resolution	1.6MP	
Lens	8 mm lens with liquid lens	6.2 mm fixed lens
Aimer	On-axis green LED aimer	
Status Outputs	OLED display, LED ring light, beeper, vibration	
Communications	Serial: RS-232 and USB Ethernet: TCP/IP, FTP, industrial protocols: EtherNet/IP, PROFINET, MC protocol, Modbus TCP Intelligent base station: RS-232, USB, Ethernet, industrial protocols Bluetooth communicates to intelligent Bluetooth base station or directly to PC/phone/tablet Wi-Fi (2.4GHz & 5GHz) communicates to intelligent Wi-Fi base station or infrastructure mode to a wireless router ¹	
Lighting	Diffuse, polarized, direct	Diffuse
Symbologies	1D: UPC/EAN/JAN, Codabar, Interleaved 2 of 5, Code 39, Code 128, Code 93, POSTNET, PLANET Code, IMB, Postal 2D: Data Matrix, QR, MicroQR, PDF417, MaxiCode, Aztec	
Dimensions	Wireless: 221 mm (H) x 114.1 mm (L) Corded: 233.2 mm (H) x 114.1 mm (L)	Wireless: 211.4 mm (H) x 113.1 mm (L) Corded: 223.4 mm (H) x 113.1 mm (L)
Weight	Wireless weight: 548 g (battery included) Corded weight: 450 g (+ approx. 130 g for cables)	Wireless weight: 479 g (battery included) Corded weight: 395 g (+ approx. 130 g for cables)
Operating Temperature	0°C–40°C (32°F–104°F)	
Storage Temperature	-40°C–60°C (-40°F–140°F)	
Maximum Humidity	95% (non-condensing)	
Power Supply Requirements	DataMan 8700 with serial/USB: 5.5 V DC, 6.0 W maximum LPS or NEC Class 2 power supply DataMan 8700 with Ethernet: PoE Class 2 power supply DataMan 8700 with Bluetooth: 3.7 V, 5000 mAh Li-ion battery DataMan Intelligent Base Station: 5.5 V DC, 6 W maximum LPS or NEC Class 2 power supply or PoE Class 2 power supply	
Wireless Unit Scans per Full Charge	125,000+	
Protection	Handheld reader: IP67; Base station: IP65	
Drop Test	Multiple drops from 2.5 meters	
Environmental	Compliant with latest EU RoHS and China RoHS	
Regulatory	EU: CE EMC & RED USA/Canada: cTUVus IEC 61010-1, part 15B, ICES 03 Korea: KCC	
Data Validation	US DoD UID guidelines, GS-1, ISO15434 and ISO15418	
Operating System	Windows 7 and Windows 10	

¹ Available in 2021

COGNEX

Companies around the world rely on Cognex vision and barcode reading solutions to optimize quality, drive down costs and control traceability.

Corporate Headquarters One Vision Drive Natick, MA 01760 USA

Regional Sales Offices

Americas

North America +1 844-999-2469
 Brazil +55 (11) 2626 7301
 Mexico +800 733 4116

Europe

Austria +49 721 958 8052
 Belgium +32 289 370 75
 France +33 1 7654 9318
 Germany +49 721 958 8052

Hungary +36 800 80291
 Ireland +44 121 29 65 163
 Italy +39 02 3057 8196
 Netherlands +31 207 941 398
 Poland +48 717 121 086
 Spain +34 93 299 28 14
 Sweden +46 21 14 55 88
 Switzerland +41 445 788 877
 Turkey +90 216 900 1696
 United Kingdom +44 121 29 65 163

Asia

China +86 21 6208 1133
 India +9120 4014 7840
 Japan +81 3 5977 5400
 Korea +82 2 530 9047
 Malaysia +6019 916 5532
 Singapore +65 632 55 700
 Taiwan +886 3 578 0060
 Thailand +66 88 7978924
 Vietnam +84 2444 583358



WALZ
 Label & Mailing Systems
 624 High Point Ln., East Peoria, IL 61611-9329
 (309) 698-1500 T/F (877) 971-1500
 www.walzeq.com email: walz@walzeq.com

© Copyright 2020, Cognex Corporation.
 All information in this document is subject to change without notice. All Rights Reserved. Cognex, DataMan, 1DMax, Hotbars, 2DMax, PatMax, and PowerGrid are registered trademarks of Cognex Corporation. All other trademarks are property of their respective owners. Lit. No. DSDM8700-11-2020

www.cognex.com